

# A10 MICROSOFT SYSTEM CENTER OPERATIONS MANAGER

## A10 Management Pack for SCOM



### Centralized Management and Monitoring for A10 ADCs

Today's networks include a wide range of devices, such as application servers, switches, routers, load balancers and many others. Network administrators face significant challenges and complexity when deciding how the growing plethora of network devices can be managed and monitored. These aforementioned devices are required to be managed and monitored in depth in order to provide outstanding application uptime performance. In depth management means that each component of a device, such as the processors, hard disks, memory, power supply and its services are critical to be monitored.

To address these challenges, A10 developed a solution, the A10 Management Pack for Microsoft System Center Operation Management (SCOM). The tool is a snap-in solution installed on Windows 2008 R2 or Windows 2012 Server that monitors and manages the information generated by running A10 ADCs. For example, the tool tracks information such as health status, system state, alerts and performance metrics, and manages that information.

The A10 Management Pack for SCOM enables a network administrator to have a centralized view of management and provides near real-time performance monitoring for all A10 devices in the network.

Microsoft SCOM is a network management system (NMS) that utilizes a single interface to monitor and manage A10's ADCs at any given time.

In order for the monitoring and management process to work, A10's management pack needs to be installed directly on the Microsoft SCOM instance. The management pack acts as an "agent" that watches specific event logs and alerts. This information is integrated and presented within the SCOM Dashboard. Microsoft SCOM monitors the A10 devices via Simple Network Management Protocol (SNMP). SCOM can also use aXAPI integration with the A10 devices to enable and disable various services within the ADC.

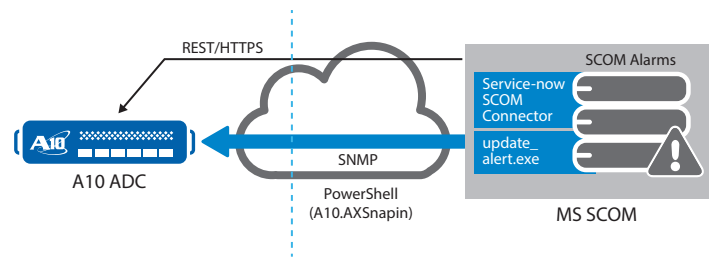


Figure 1: SCOM and ADC Integration Overview

### A10 SCOM Snap-in

The A10 Management Pack for SCOM is a software snap-in that enables extensive monitoring of A10 devices within a network, which monitors the following components:

- Interfaces
- CPUs
- System Memory
- Hard Disk(s)
- Real-Servers
- Real-Ports
- Virtual-Servers
- Virtual-Ports
- Service Groups
- Service Group Members

### Benefits

- A10's management pack is fully integrated with Microsoft SCOM.
- The A10 Management Pack has no licensing costs unlike some competitors; system administrators are capable of implementing the feature at any time without delays.
- Near real-time and zero-delay latency health monitoring and alerting for A10 devices.
- Full SCOM integration with Windows 2008 R2 or Windows 2012 Servers.
- Reduce administrative tasks by automating processes and eliminating manual system verifications.
- Easy auto-discovery process and inventory collection for all A10 devices.

- Gain visibility into network utilization rates, application uptime, hardware health status, and access to historical trend analysis.
- Extensive health and performance reports.
- Bird's-eye view of the comprehensive system and application critical components.

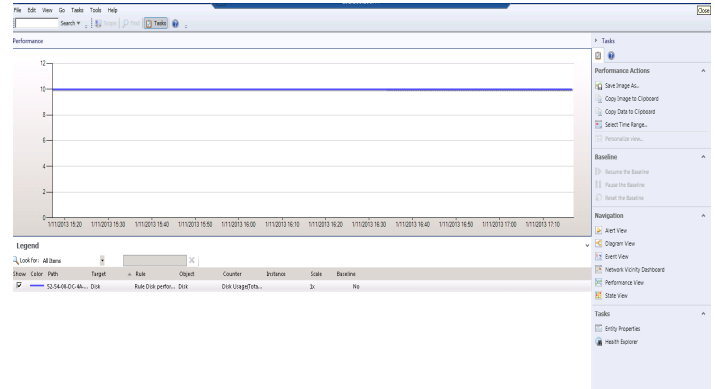
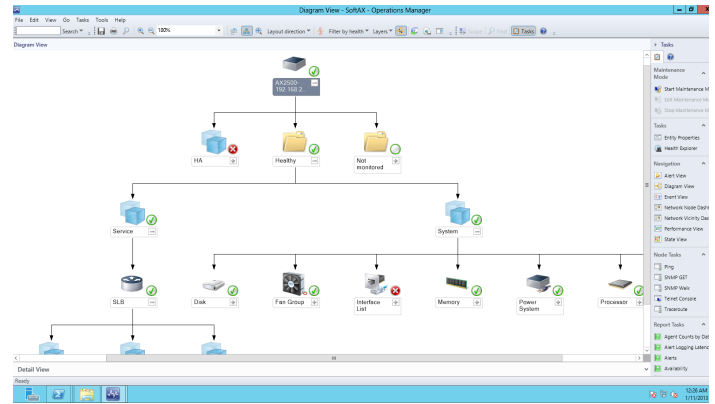
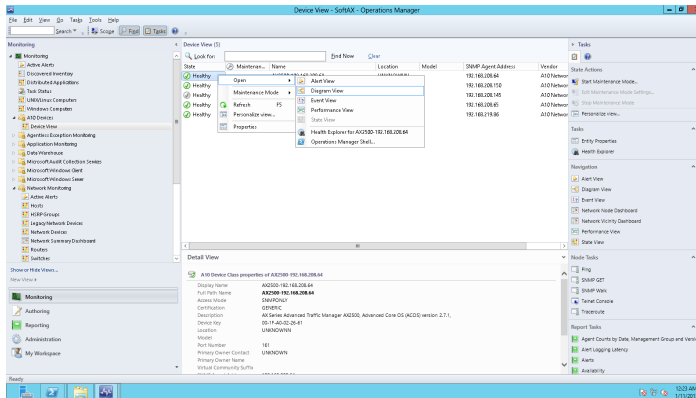
In addition to the A10 Management Pack for SCOM, A10 also offers additional monitoring and management options:

- Command Line Interface (CLI)
- Graphical User Interface (GUI)
- **aXAPI** – a REST-based Application Programming Interface (API) that enables remote interaction with the device from third-party applications in order to control the ADC.
- **aGalaxy** – centralized management solution enables a network administrator to manage any A10 device from a single point. aGalaxy is a robust network monitoring and management solution that offers an intuitive interface that can be utilized to perform and automate a variety of essential tasks.

## Summary

The A10 Management Pack for SCOM delivers detailed component and application alerts and event information to Microsoft SCOM for your network. The result is unprecedented visibility into the health and status of your A10 devices.

## Screenshots



## About A10 Networks

A10 Networks is a leader in application networking, providing a range of high-performance application networking solutions that help organizations ensure that their data center applications and networks remain highly available, accelerated and secure. Founded in 2004, A10 Networks is based in San Jose, California, and serves customers globally with offices worldwide. For more information, visit: [www.a10networks.com](http://www.a10networks.com)

### Corporate Headquarters

**A10 Networks, Inc**  
 3 West Plumeria Ave.  
 San Jose, CA 95134 USA  
 Tel: +1 408 325-8668  
 Fax: +1 408 325-8666  
[www.a10networks.com](http://www.a10networks.com)

Part Number: A10-SB-19109-EN-01  
 Apr 2014

### Worldwide Offices

**North America**  
[sales@a10networks.com](mailto:sales@a10networks.com)

**Europe**  
[emea\\_sales@a10networks.com](mailto:emea_sales@a10networks.com)

**South America**  
[brazil@a10networks.com](mailto:brazil@a10networks.com)

**Japan**  
[jinfo@a10networks.com](mailto:jinfo@a10networks.com)

**China**  
[china\\_sales@a10networks.com](mailto:china_sales@a10networks.com)

**Taiwan**  
[taiwan@a10networks.com](mailto:taiwan@a10networks.com)

**Korea**  
[korea@a10networks.com](mailto:korea@a10networks.com)

**Hong Kong**  
[HongKong@a10networks.com](mailto:HongKong@a10networks.com)

**South Asia**  
[SouthAsia@a10networks.com](mailto:SouthAsia@a10networks.com)

**Australia/New Zealand**  
[anz\\_sales@a10networks.com](mailto:anz_sales@a10networks.com)

To learn more about the A10 Thunder Application Service Gateways and how it can enhance your business, contact A10 Networks at: [www.a10networks.com/contact](http://www.a10networks.com/contact) or call to talk to an A10 sales representative.