

# Thunder ADC

## Application Delivery Controller and Advanced Load Balancer

Offering a complete application solution, A10 Thunder® Application Delivery Controller (ADC) protects critical applications, ensures server availability and accelerates content delivery. It masters multi-cloud and hybrid cloud deployments with a holistic approach that reduces complexity and cost for IT operations, providing better business outcomes.

### Secure and Agile Application Delivery

From SMBs and large enterprises to service providers and cloud operators, organizations are managing a large and rapidly growing set of mission-critical applications.

A purpose-built solution, A10 Thunder ADC ensures these applications are secure, highly available, and accelerated. It helps ensure business continuity, reduce downtime and build highly available applications across global data centers and/or multiple clouds.

Thunder ADC delivers the capacity, scalability, multi-tenancy and programmability to adjust to an ever-changing environment. Consolidate point products, reduce network complexity and achieve a substantial reduction in TCO.

Thunder ADC is an advanced L4-7 load balancer that delivers multiple layers of security via web and DNS app firewalls, single sign-on (SSO) authentication and in-depth support for advanced encryption including high-performance PFS/ECC. Built upon A10's Advanced Core Operating System (ACOS®) platform, Thunder ADC delivers application security and performance for any environment.

### Platforms



Cloud



Container



Virtual Appliance



Bare Metal



Physical and SPE Appliances

### Related Products



A10 Control  
Centralized Analytics  
and Management



FlexPool  
Capacity Pooling License

# Benefits



## Enhance Application Availability

Organizations must guarantee their applications are constantly accessible. Thunder ADC utilizes multiple load balancing techniques to efficiently distribute workloads across all servers while constantly evaluating application health. Client requests are forwarded to servers that host the proper content and can best respond to ensure secure application and content delivery.



## Ensure Business Continuity

With data centers proliferating worldwide, administrators must maintain around-the-clock global operational integrity. To guarantee cohesion and optimize app delivery among diverse sites or clouds, Thunder ADC includes advanced global server load balancing (GSLB) working with other application delivery features. GSLB expands functionality across global data centers for high availability, fault tolerance, and the best user experience.



## Accelerate Content Delivery

Applications must be responsive – no matter the location – to ensure a superior end-user experience, enhance remote employee productivity and exceed SLA mandates. Thunder ADC overcomes the inherent WAN latencies, inefficient software programs and chatty protocols to provide fast and responsive service. End users receive a superior user experience while organizations gain a competitive advantage.



## Protect Critical Applications

Software development and testing can catch most, but typically not all, coding flaws. The resulting applications are susceptible to attacks that cannot be blocked by intrusion prevention systems (IPS), next-generation firewalls or sandboxing. Businesses lose revenue, suffer damaged brand reputation and loss of confidential data. Thunder ADC provides protection against 'zero day' and other emerging application layer threats with DNS and next-generation web application firewalls.



## Secure Communications

Internet sessions are rapidly adopting encryption to secure online data transport. Clients and servers, meanwhile, negotiate the most secure and complex methods mutually supported. Thunder ADC front-ends servers and offloads cumbersome, processing-intensive tasks associated with the latest cryptographic standards. This maximizes content protection, speeds delivery and lowers infrastructure expenses.



## Consolidate Access Control

Organizations must allow external clients access to web portals, internal resources and mobile/BYOD apps. At the same time, security must be maintained with authentication and be transparent to the user.

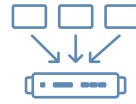
Thunder ADC centrally manages multiple facets of authentication, authorization and accounting (AAA) with a system-wide perspective, while eliminating separate authentication points, for a true single sign-on (SSO) experience.

# Benefits (cont.)



## Hybrid-cloud Operational Efficiency

In a multi-cloud, or hybrid cloud environment, it's essential for IT operations to have a standardized ADC and service visibility from a business and OPEX planning perspective. Thunder ADC can be deployed in a virtual and container environment with flexible and portable licensing, yet deliver feature parity regardless of the form factor. A10 Control, a centralized analytics and management platform, enables effective operation by providing deeper secure application service analytics, easy troubleshooting tools and centralized policy enforcement control.

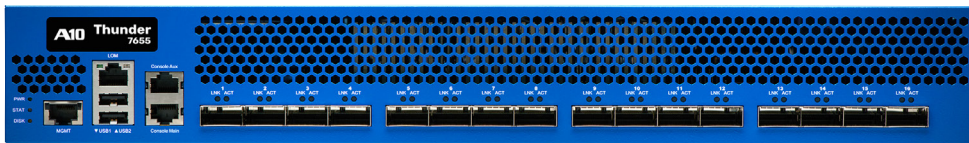


## Optimize Applications via Multi-Tenancy

To optimize the delivery and security for potentially hundreds of apps in a given data center, IT administrators need a multi-tenant methodology.

Thunder ADC provides the ability to granularly program over 250 individual partitions on a single appliance for tailor-made policies by application, service, or user, while consolidating appliances.

## Thunder 7655S ADC by the Numbers

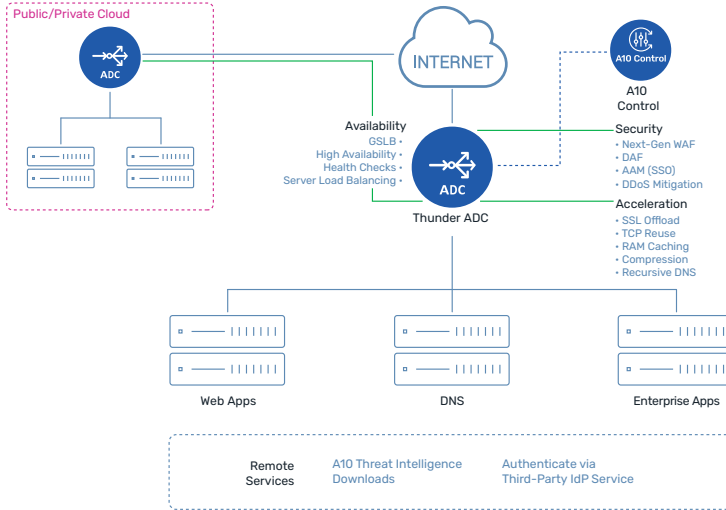


<p><b>370/340 Gbps</b></p> <p>L4/L7 Application Throughput</p>	<p><b>100</b></p> <p>GE Interfaces</p>	<p><b>12M</b></p> <p>L4 Connections Per Second</p>
<p><b>768M</b></p> <p>Concurrent Sessions</p>	<p><b>145 Gbps</b></p> <p>SSL Bulk Throughput</p>	

### Industry-leading Performance

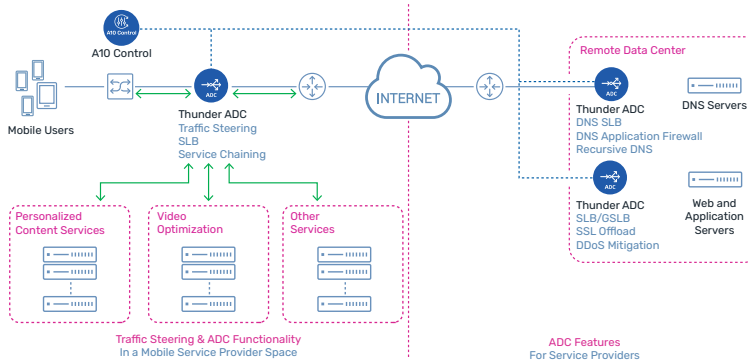
Thunder ADC delivers industry-leading performance – 370 Gbps of application throughput and 145 Gbps of TLS/SSL bulk throughput – in a single 1.5U appliance, rich ADC features (all-inclusive) in the broadest range of form factors, including physical, virtual, bare metal, containers for multi-tenancy and cloud.

# Reference Architectures



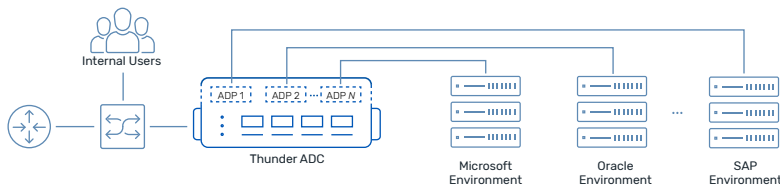
## Enterprise Deployment

Offering industry-leading performance – up to 370 Gbps in a single hardware and 100 Gbps in a virtual appliance, Thunder ADC may be deployed at the core of an environment to deliver high-performance application delivery, load balancing and security. In multi-cloud environments, Thunder ADC can be deployed in any private or public cloud in a virtual or container form factor, with consistent features across clouds.



## Service Provider Deployment

Proven in large-scale service provider environments, Thunder ADC may be deployed to optimize network efficiency and services via traffic steering and service chaining to multiple value-added services, such as video optimization. The solution includes carrier-grade networking (CGN) support for IPv4 address expansion and IPv6 migration.

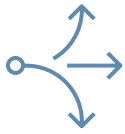


## Application Delivery Partitions

A10 Thunder ADC supports multi-tenant environments with application delivery partitions (ADP). Configure good number of ADC tenant partitions on a single appliance that also enables Layer 3 virtualization. Each partition may be configured for a unique set of policies and offers sufficient resource isolation for most application-oriented use cases.

# Features

## Application Delivery and Performance



### Advanced Server Load Balancing

Thunder ADC is a full-proxy, load-balancing and content-switching solution. With aFleX® scripting, deep packet inspection, comprehensive load-balancing algorithms and persistence support, Thunder ADC enables application layer visibility to optimally route inbound requests.

Customizable server health checks ensure only fully functional servers are used to service client needs. The server best able to respond is selected and total servers required can be substantially reduced for lower TCO.



### Broad Acceleration Methodologies

Leverage numerous techniques to overcome inherent distance-related latency, inefficient internet protocols and application design limitations. Acceleration methods, including TCP connection multiplexing, RAM caching, GZIP compression and SSL-offload, expedite content transfer. The solution supports TCP optimization standards such as selective acknowledgment, client keep-alive and window scaling, to further speed delivery.



### Ultra-low Latency For Financial Applications

The Thunder ADC family also offers solutions for low latency applications, featuring specialized Thunder appliances with custom software, to meet the low latency and jitter requirements of financial applications. Featuring ultra-low latency hardware, these appliances offer near instantaneous execution times and provide granular program policies for efficient packet forwarding, while also consolidating multiple network functions, thus reducing hops.



### Global Server Load Balancing (GSLB)

Extend load balancing on a global basis. Thunder ADCs, distributed worldwide, continuously update each other on their respective individual nodes for optimal site selection and status to ensure disaster recovery.

Geographic and network proximity policy metrics optimize multi-site deployments. DNS proxy or DNS server methods further improve implementation flexibility and deployment simplicity.



### High Density Application Delivery Partitions

Provide support for multi-tenant environments with application delivery partitions (ADP). They allow the configuration of 250 or more partitions on a single Thunder ADC appliance, which enables Layer 3 virtualization. Each partition may be configured for a unique set of policies and offers resource isolation for most application-oriented use cases.



### Recursive DNS For Consolidation

Thunder ADC provides powerful recursive DNS capability enabling a one-stop DNS solution that leverages the high performance of ACOS DNS cache service, the scalability of DNS load balancing and the security of DNS application firewall (DAF). This makes the ADC recursive DNS feature a perfect solution for any enterprise or service provider seeking to consolidate DNS services and drive higher customer satisfaction.

## Application Security



### Zero-day Application Protection

A10 Next-Gen WAF, powered by Fastly, leverages advanced technology to protect web applications from complex modern threats while minimizing false positives and ensuring availability. It offers exceptional baseline protection requiring minimal or no tuning and comprehensive attack coverage beyond OWASP Top 10, ATO, and CVEs. By using a threshold-based approach, complemented by intelligent smart parse technology, A10 Next-Gen WAF accomplishes highly effective automated detection and blocking.

The solution offers superior protection and performance compared to any other integrated web application firewall/application delivery controller solution while reducing TCO.



### Powerful DNS LB and Firewall

Thunder ADC enables scalable DNS services by load-balancing multiple DNS servers and with cache DNS capabilities, while supporting recursive DNS lookup. To secure DNS services, the ADC incorporates a sophisticated DNS application firewall (DAF), DNS RPZ and integrated DDoS protection to filter unwanted and malformed requests, stop buffer overflows and head off DNS amplification-based DDoS attacks. It delivers validated DNSSEC pass-through support to prevent threats such as DNS cache-poisoning and spoofing.



### Extensive Cipher Suite Support

Hardware-based SSL offload engines support advanced cryptographic methods at ultra-high capacity. Thunder ADC can manage session security, such as perfect forward secrecy (PFS), with an advanced cipher suite, including elliptic curve cryptography (ECC).

Appliances can process TLS/SSL encryption and decryption at rates 145 Gbps—and up to 140,000 connections per second—when using ECC with 256-bit keys.



### SSO and Application Authentication

The integrated application access management (AAM) module optimizes and enforces authentication and authorization to applications.

The module integrates with authentication servers, identity data stores, identity providers (IdPs) and applications to authenticate users and enforce access privileges. Common AAA and single sign-on (SSO) methods include LDAP, RADIUS, RSA SecurID, TDS SQL, SAML and Kerberos.

AAM interfaces to OCSP responders to validate client certificate status, as well as to Microsoft Active Directory for SharePoint and Outlook Web Access users.

## Application Security (cont.)



### DDoS Protection for App Services

DDoS protection is standard in all Thunder ADC appliances. With FTA-based hardware models, using field-programmable gate arrays (FPGA), protection may be enabled for high-volume attacks against application servers. FPGAs mitigate common volumetric attacks, while general-purpose CPUs mitigate more sophisticated low-and-slow and application attacks, such as Slowloris and HTTP floods. Additional methods to limit unwarranted data floods include connection rate limiting and bandwidth rate limiting per source IP.



### Threat Intelligence Service

An optional subscription, the A10 Threat Intelligence Service provides data from more than three-dozen security sources, including DShield and Shadowserver. The service enables Thunder ADC to instantly recognize and block traffic to and from known malicious IP address sources. The service protects networks from future threats, blocks threats such as spam and phishing, and greatly increases Thunder ADC efficiency.



Next-Gen WAF, Powered by Fastly is PCI DSS compliant as a Level 1 service provider and fulfills PCI requirement 6.6

## Application Visibility and Management



### Analytics

#### Visibility and Logging

When deployed in conjunction with the A10 Control, Thunder ADC provides access to dozens of aggregate and per-request metrics in real time. These include end-to-end response times, latency, popular URLs, and error and health indicators. The data is analyzed to provide per-app reporting and alerts on availability, security and performance.

Detailed Layer 4 based analytics information is separately provided by individual clients, ADC (single appliance or as a cluster) and per server.



### DevOps

#### Automation

Recognizing the need for effective operation for multi-cloud deployment, Thunder ADC has tight integration with many automation, cloud orchestration and DevOps tools.

- Supports various cloud platform and technologies including OpenStack, OpenShift, Kubernetes and more.
- Provides native integration with Infrastructure as Code (IaC) for provisioning and configuration automation, such as Terraform and Ansible.
- Automates network operation with dynamic ADC configuration update using Thunder Kubernetes Connector (TKC), HashiCorp Consul and network infrastructure automation (NIA).
- Monitors application network with common open-source tools such as Prometheus, Grafana and Fluentd.
- Provides quick and easy deployment using resource manager template in public cloud, including Azure Resource Manager (ARM) and AWS CloudFormation templates.
- Seamlessly integrates with well-known tools for improved performance monitoring and log management, such as AWS CloudWatch, Azure Application Insights, vRealize Operations Manager (vROps), Azure Log Analytics Workspace, and vRealize Log Insight (vRLI).



### API

#### Full Programmability

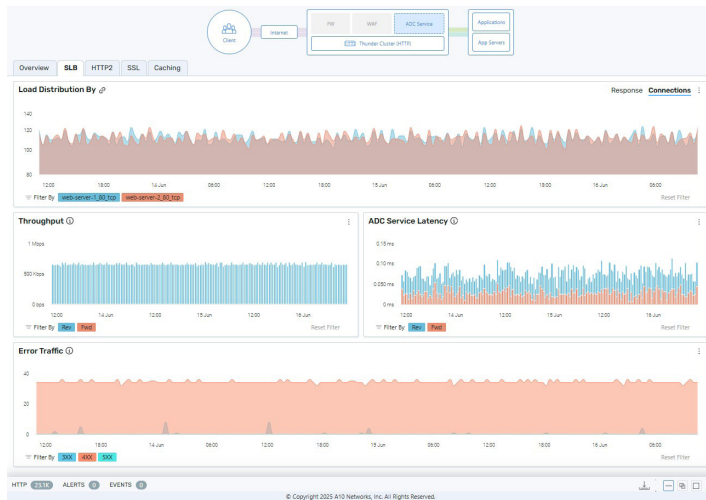
The Thunder ADC platform leverages A10's REST-based aXAPIs to configure all features with 100 percent API coverage. This interface is used to integrate with third-party or custom management consoles, such as SDN platforms (e.g., VMware) and cloud orchestration systems (e.g., OpenStack and Microsoft SCVMM). A software plug-in is available for private clouds leveraging vRealize Orchestrator from VMware.



### Comprehensive

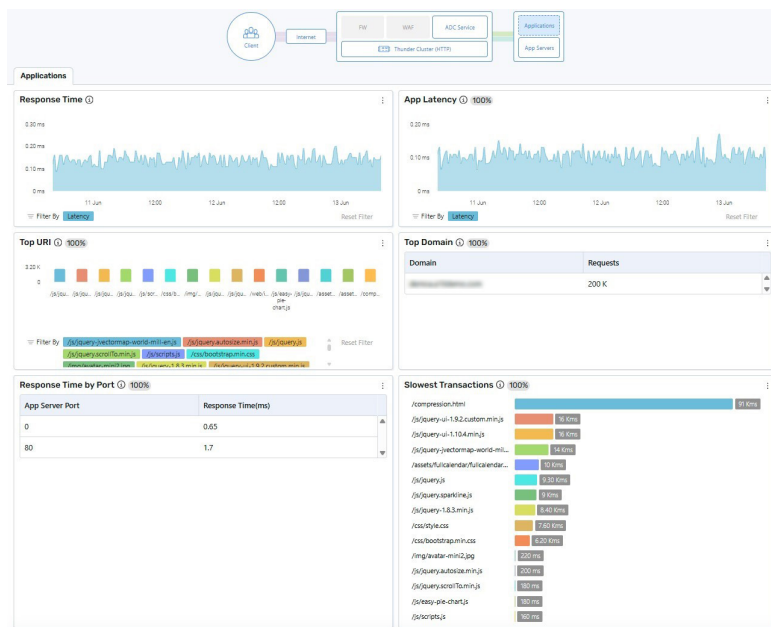
#### Management Tools

A10 Control is a centralized management platform that coordinates and distributes application-centric service policies and configuration files to hundreds of Thunder appliances and device cluster infrastructures across multi-cloud environments. Administrators can automatically discover, track and monitor each appliance including key operational metrics such as CPU and disk usage as well as device partitions and users. The controller performs configuration backup and restore operations and schedules software upgrades.



### ADC Service View

Thunder ADC with A10 Control provides granular real-time analytics of the ADC services. Information available for each application service port includes user traffic throughput and connection rate, load distribution, ADC service latency, RAM cache utilization, compression statistics, SSL connection rates and error traffic rate.



### Applications View

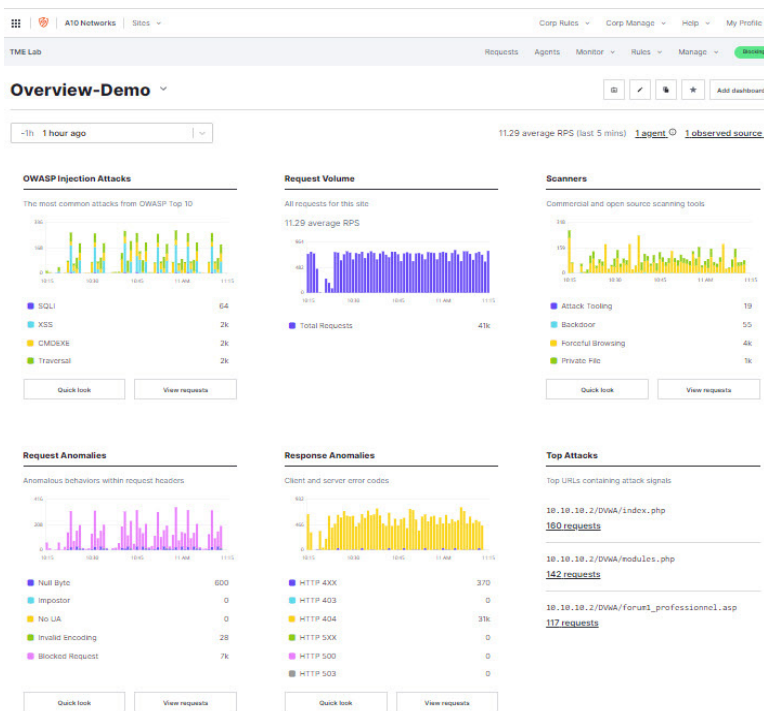
Get a real-time status report of the application services, including application response time and latency, top URL analytics, top domains analytics for global usage visualization, response type analytics by port number and slow transaction analytics per page under the application.



### Response Time Details

This information is useful for troubleshooting delayed application response times. The screen details the time taken in various portions of a HTTP transaction. These graphs also help distinguish application vs. infrastructure related issues.

## A10 Next-Gen WAF Visibility & Analytics



### Next-Gen WAF Dashboard

Gain a holistic perspective on the activity across all applications with a comprehensive understanding of the overall picture. It also includes predefined and customizable dashboards that highlight attack and anomaly trends, allowing for easy monitoring and analysis. Additionally, the system provides real-time visibility and collection of metrics, enabling users to stay updated on the latest information. The events and requests view further enhances the understanding by presenting a detailed timeline that illustrates the sequence of actions leading to blocking.

# Thunder ADC Physical Appliance Specifications

	Thunder 1060S ADC			
Modular License	10 Gbps	20 Gbps	25 Gbps	35 Gbps
<b>Performance</b>				
Application Throughput (L4/L7)	10 Gbps / 10 Gbps	20 Gbps / 20 Gbps	25 Gbps / 25 Gbps	35 Gbps / 35 Gbps
Layer 4 CPS	550K	550K	800K	800K
Layer 4 Concurrent Sessions	32 Million	128 Million	96 Million	128 Million
Layer 7 CPS (1:1) <sup>1</sup>	200K	200K	480K	480K
SSL Bulk Throughput <sup>2</sup>	9 Gbps	9 Gbps	15 Gbps	18 Gbps
SSL CPS <sup>2</sup>	RSA: 15K ECDSA: 5K	RSA: 15K ECDSA: 8K	RSA: 28K ECDSA: 9K	RSA: 28K ECDSA: 16K
DDoS Protection (SYN flood) SYN/sec	4 Million	4 Million	8 Million	8 Million
<b>Network Interfaces</b>				
1 GE (BASE-T)	7	7	7	7
1 GE Fiber (SFP)	0	0	0	0
10/1 GE Fiber (SFP+/SFP)	4	4	4	4
25/10 GE Fiber (SFP28/SFP+)	2	2	2	2
40 GE Fiber (QSFP+)	0	0	0	0
100/40 GE Fiber (QSFP28/QSFP+)	0	0	0	0
Management Ports	Ethernet mgmt. port, RJ-45 console port			
<b>Hardware Specifications</b>				
Processor	Intel communications processor 20-core [9-core active]	Intel communications processor 20-core [9-core active]	Intel communications processor 20-core	Intel communications processor 20-core
Memory (ECC RAM)	32 GB [24 GB active]	32 GB	32 GB	32 GB
Storage	SSD	SSD	SSD	SSD
Hardware Acceleration	Software	Software	Software	Software
TLS/SSL Security Acceleration	Hardware	Hardware	Hardware	Hardware
Dimensions (inches)	1.75 (H) x 17.5 (W) x 17(D)	1.75 (H) x 17.5 (W) x 17(D)	1.75 (H) x 17.5 (W) x 17(D)	1.75 (H) x 17.5 (W) x 17(D)
Rack Units (mountable)	1U	1U	1U	1U
Unit Weight <sup>3</sup>	12 lbs	12 lbs	12 lbs	12 lbs
Power Supply (DC option available)	Dual 300W RPS	Dual 300W RPS	Dual 300W RPS	Dual 300W RPS
	80 Plus Gold efficiency, 100 - 240 VAC, 50 - 60 Hz			
Power Consumption (typical/max) <sup>3</sup>	112W / 127W	112W / 127W	112W / 127W	112W / 127W
Heat in BTU/hour (typical/max) <sup>3</sup>	383 / 434	383 / 434	383 / 434	383 / 434
Cooling Fan (front-to-back airflow)	Removable fans			
Operating Ranges	Temperature 0° - 40° C   Humidity 5% - 95%			
Regulatory Certifications	FCC Class A, UL, ICES, CE, UKCA, CB, VCCI, BSMI, RCM, MTCTE <sup>+</sup>   RoHS	FCC Class A, UL, ICES, CE, UKCA, CB, VCCI, BSMI, RCM, MTCTE <sup>+</sup>   RoHS	FCC Class A, UL, ICES, CE, UKCA, CB, VCCI, BSMI, RCM, MTCTE <sup>+</sup>   RoHS	FCC Class A, UL, ICES, CE, UKCA, CB, VCCI, BSMI, RCM, MTCTE <sup>+</sup>   RoHS
Standard Warranty	90-day hardware and software			

## Thunder ADC Physical Appliance (cont.)

	Thunder 3350-E <sup>ADC</sup>	Thunder 3350 <sup>ADC</sup>	Thunder 3350S <sup>ADC7</sup>
Modular License	-	-	10 Gbps
<b>Performance</b>			
Application Throughput (L4/L7)	30 Gbps / 30 Gbps	40 Gbps / 40 Gbps	50 Gbps/ 50 Gbps
Layer 4 CPS	800K	1 Million	2 Million
Layer 4 Concurrent Sessions	64 Million	96 Million	128 Million
Layer 7 CPS (1:1) <sup>11</sup>	330K	500K	750K
SSL Bulk Throughput <sup>2</sup>	13 Gbps	18 Gbps	30 Gbps
SSL CPS <sup>2</sup>	RSA: 28K ECDSA: 15K	RSA: 28K ECDSA: 15K	RSA: 60K ECDSA: 35K
DDoS Protection (SYN flood) SYN/sec	8 Million	8 Million	16 Million
<b>Network Interfaces</b>			
1 GE (BASE-T)	6	6	6
1 GE Fiber (SFP)	2	2	2
10/1 GE Fiber (SFP+/SFP)	8 + 4 <sup>6</sup>	4 <sup>6</sup>	8 + 4 <sup>6</sup>
25/10 GE Fiber (SFP28/SFP+)	0	4	0
40 GE Fiber (QSFP+)	0	4	0
100/40 GE Fiber (QSFP28/QSFP+)	0	0	0
Management Ports	Ethernet mgmt. port, RJ-45 console port		
<b>Hardware Specifications</b>			
Processor	Intel Xeon 8-core	Intel Xeon 8-core	Intel Xeon 14-core
Memory (ECC RAM)	16 GB	32 GB	64 GB
Storage	SSD	SSD	SSD
Hardware Acceleration	Software	Software	Software
TLS/SSL Security Acceleration	Hardware	Hardware	Hardware
Dimensions (inches)	1.75 (H) x 17.5 (W) x 18(D)	1.75 (H) x 17.5 (W) x 18(D)	1.75 (H) x 17.5 (W) x 18(D)
Rack Units (mountable)	1U	1U	1U
Unit Weight <sup>3</sup>	18 lbs	18 lbs	18 lbs
Power Supply (DC option available)	Dual 750W RPS	Dual 750W RPS	Dual 750W RPS
	80 Plus Platinum efficiency, 100 - 240 VAC, 50 - 60 Hz		
Power Consumption (typical/max) <sup>3</sup>	151W / 205W	165W / 238W	175W / 222W
Heat in BTU/hour (typical/max) <sup>3</sup>	516 / 700	564 / 831	598 / 758
Cooling Fan (front-to-back airflow)	Hot swap smart fans		
Operating Ranges	Temperature 0° - 40° C   Humidity 5% - 95%		
Regulatory Certifications	FCC Class A, UL, CE, UKCA, VCCI, BSMI, RCM, MTCTE*   RoHS	FCC Class A, UL, CE, UKCA, CB, VCCI, KCC, BSMI, RCM, MTCTE*   RoHS	FCC Class A, UL, CE, UKCA, CB, VCCI, KCC, BSMI, RCM, MTCTE*   RoHS, FIPS 140-2 <sup>5</sup>
Standard Warranty	90-day hardware and software		

## Thunder ADC Physical Appliance (cont.)

	Thunder 4440 <sup>ADC</sup>	Thunder 5440 <sup>ADC</sup>	Thunder 5840 <sup>ADC</sup>
Modular License	-	-	-
<b>Performance</b>			
Application Throughput (L4/L7)	78 Gbps / 70 Gbps	100 Gbps / 100 Gbps	115 Gbps / 113 Gbps
Layer 4 CPS	2 Million	3 Million	4 Million
Layer 4 Concurrent Sessions	128 Million	256 Million	256 Million
Layer 7 CPS (1:1) <sup>1</sup>	750K	950K	1.5 Million
SSL Bulk Throughput <sup>2</sup>	N/A <sup>8</sup>	N/A <sup>8</sup>	N/A <sup>8</sup>
SSL CPS <sup>2</sup>	N/A <sup>8</sup>	N/A <sup>8</sup>	N/A <sup>8</sup>
DDoS Protection (SYN flood) SYN/sec	110 Million	166 Million	166 Million
<b>Network Interfaces</b>			
1 GE (BASE-T)	0	0	0
1 GE Fiber (SFP)	0	0	0
10/1 GE Fiber (SFP+/SFP)	24	24	24
25/10 GE Fiber (SFP28/SFP+)	0	0	0
40 GE Fiber (QSFP+)	4	4	4
100/40 GE Fiber (QSFP28/QSFP+)	0	0	0
Management Ports	Ethernet mgmt. port, RJ-45 console port, Lights out management		
<b>Hardware Specifications</b>			
Processor	Intel Xeon 6-core	Intel Xeon 12-core	Intel Xeon 18-core
Memory (ECC RAM)	32 GB	64 GB	64 GB
Storage	SSD	SSD	SSD
Hardware Acceleration	2 x FTA-4	2 x FTA-4	2 x FTA-4
TLS/SSL Security Acceleration	Software <sup>9</sup>	Software <sup>9</sup>	Software <sup>9</sup>
Dimensions (inches)	1.75 (H) x 17.5 (W) x 30 (D)	1.75 (H) x 17.5 (W) x 30 (D)	1.75 (H) x 17.5 (W) x 30 (D)
Rack Units (mountable)	1U	1U	1U
Unit Weight <sup>3</sup>	32.5 lbs	32.5 lbs	32.5 lbs
Power Supply (DC option available)	Dual 1100W RPS	Dual 1100W RPS	Dual 1100W RPS
	80 Plus Platinum efficiency, 100 - 240 VAC, 50 - 60 Hz		
Power Consumption (typical/max) <sup>3</sup>	360W / 445W	360W / 445W	375W / 470W
Heat in BTU/hour (typical/max) <sup>3</sup>	1,229 / 1,519	1,229 / 1,519	1,280 / 1,604
Cooling Fan (front-to-back airflow)	Hot swap smart fans		
Operating Ranges	Temperature 0° - 40° C   Humidity 5% - 95%		
Regulatory Certifications	FCC Class A, UL, CE, UKCA, CB, VCCI, KCC, BSMI, RCM, MTCTE <sup>+</sup>   RoHS	FCC Class A, UL, CE, UKCA, CB, VCCI, KCC, BSMI, RCM, MTCTE <sup>+</sup>   RoHS, FIPS 140-2 <sup>5</sup>	FCC Class A, UL, CE, UKCA, CB, VCCI, KCC, BSMI, RCM, MTCTE <sup>+</sup>   RoHS, FIPS 140-2 <sup>5</sup>
Standard Warranty	90-day hardware and software		

## Thunder ADC Physical Appliance (cont.)

	Thunder 5840-11 <sup>ADC</sup>	Thunder 6440 <sup>ADC</sup>	Thunder 7440 <sup>ADC</sup>	Thunder 7440-11 <sup>ADC</sup>
Modular License	50 Gbps	-	-	-
<b>Performance</b>				
Application Throughput (L4/L7)	115 Gbps / 113 Gbps	150 Gbps / 140 Gbps	220 Gbps / 200 Gbps	220 Gbps / 200 Gbps
Layer 4 CPS	4 Million	4 Million	7.5 Million	7.5 Million
Layer 4 Concurrent Sessions	256 Million	256 Million	256 Million	256 Million
Layer 7 CPS (1:1) <sup>1</sup>	1.5 Million	1.4 Million	2.4 Million	2.4 Million
SSL Bulk Throughput <sup>2</sup>	N/A <sup>a</sup>	N/A <sup>a</sup>	N/A <sup>a</sup>	N/A <sup>a</sup>
SSL CPS <sup>2</sup>	N/A <sup>a</sup>	N/A <sup>a</sup>	N/A <sup>a</sup>	N/A <sup>a</sup>
DDoS Protection (SYN flood) SYN/sec	166 Million	238 Million	332 Million	332 Million
<b>Network Interfaces</b>				
1 GE (BASE-T)	0	0	0	0
1 GE Fiber (SFP)	0	0	0	0
10/1 GE Fiber (SFP+/SFP)	48	48	48	48
25/10 GE Fiber (SFP28/SFP+)	0	0	0	0
40 GE Fiber (QSFP+)	0	4	4	0
100/40 GE Fiber (QSFP28/QSFP+)	4	0	0	4
Management Ports	Ethernet mgmt. port, RJ-45 console port, Lights out management			
<b>Hardware Specifications</b>				
Processor	Intel Xeon 18-core	2 x Intel Xeon 10-core	2 x Intel Xeon 18-core	2 x Intel Xeon 18-core
Memory (ECC RAM)	64 GB / 128 GB <sup>4</sup>	128 GB	128 GB	128 GB
Storage	SSD	SSD	SSD	SSD
Hardware Acceleration	2 x FTA-4	3 x FTA-4	3 x FTA-4	3 x FTA-4
TLS/SSL Security Acceleration	Software <sup>a</sup>	Software <sup>a</sup>	Software <sup>a</sup>	Software <sup>a</sup>
Dimensions (inches)	1.75 (H) x 17.5 (W) x 30 (D)	1.75 (H) x 17.5 (W) x 30 (D)	1.75 (H) x 17.5 (W) x 30 (D)	1.75 (H) x 17.5 (W) x 30 (D)
Rack Units (mountable)	1U	1U	1U	1U
Unit Weight <sup>3</sup>	34.3 lbs	36 lbs	35.7 lbs	35.7 lbs
Power Supply (DC option available)	Dual 1500W RPS	Dual 1100W RPS	Dual 1100W RPS	Dual 1500W RPS
	80 Plus Platinum efficiency, 100 - 240 VAC, 50 - 60 Hz			
Power Consumption (typical/max) <sup>3</sup>	550W / 760W	480W / 550W	690W / 820W	820W / 950W
Heat in BTU/hour (typical/max) <sup>3</sup>	1,877 / 2,594	1,638 / 1,877	2,355 / 2,798	2,798 / 3,242
Cooling Fan (front-to-back airflow)	Hot swap smart fans			
Operating Ranges	Temperature 0° - 40° C   Humidity 5% - 95%			
Regulatory Certifications	FCC Class A, UL, CE, UKCA, CB, VCCI, BSMI, RCM, MTCTE <sup>a</sup>   RoHS	FCC Class A, UL, CE, UKCA, CB, VCCI, KCC, BSMI, RCM, MTCTE <sup>a</sup>   RoHS	FCC Class A, UL, CE, UKCA, CB, VCCI, KCC, BSMI, RCM, MTCTE <sup>a</sup>   RoHS	FCC Class A, UL, CE, UKCA, CB, VCCI, BSMI, RCM, MTCTE <sup>a</sup>   RoHS, FIPS 140-2 <sup>b</sup>
Standard Warranty	90-day hardware and software			

# Thunder ADC Physical Appliance (cont.)

	Thunder 7460S <sub>ADC</sub>			Thunder 7460S-MAX <sub>ADC</sub>
Modular License	150 Gbps	200 Gbps	250 Gbps	-
<b>Performance</b>				
Application Throughput (L4/L7)	150 Gbps / 130 Gbps	200 Gbps / 175 Gbps	250 Gbps / 220 Gbps	270 Gbps / 235 Gbps
Layer 4 CPS	5 Million	7 Million	9 Million	11 Million
Layer 4 Concurrent Sessions	256 Million	256 Million	256 Million	256 Million
Layer 7 CPS (1:1) <sup>*1</sup>	2 Million	2.5 Million	3.3 Million	3.5 Million
SSL Bulk Throughput <sup>*2</sup>	75 Gbps	85 Gbps	90 Gbps	95 Gbps
SSL CPS <sup>*2</sup>	RSA: 140K ECDSA: 85K	RSA: 180K ECDSA: 100K	RSA: 210K ECDSA: 120K	RSA: 290K ECDSA: 130K
DDoS Protection (SYN flood) SYN/sec	275 Million	275 Million	275 Million	275 Million
<b>Network Interfaces</b>				
1 GE (BASE-T)				0
1 GE Fiber (SFP)				0
10/1 GE Fiber (SFP+/SFP)				0
25/10 GE Fiber (SFP28/SFP+)				24
40 GE Fiber (QSFP+)				0
100/40 GE Fiber (QSFP28/QSFP+)				8
Management Ports	Ethernet mgmt. port, RJ-45 console port			
<b>Hardware Specifications</b>				
Processor	Intel Xeon 36-core [20-core active]	Intel Xeon 36-core [28-core active]	Intel Xeon 36-core	Intel Xeon 52-core
Memory (ECC RAM)	256 GB [192 GB active]	256 GB [192 GB active]	256 GB [192 GB active]	256 GB
Storage	SSD			
Hardware Acceleration	1 x FTA-6			
TLS/SSL Security Acceleration	Hardware			
Dimensions (inches)	1.75 (H) x 17.5 (W) x 30 (D)			
Rack Units (mountable)	1U			
Unit Weight <sup>*3</sup>	39.75 lbs			
Power Supply (DC option available)	Dual 1500W RPS 80 Plus Platinum efficiency, 100 - 240 VAC, 50 - 60 Hz			
Power Consumption (typical/max) <sup>*3</sup>	710W / 790W			
Heat in BTU/hour (typical/max) <sup>*3</sup>	2,423 / 2,696			
Cooling Fan (front-to-back airflow)	Hot swap smart fans			
Operating Ranges	Temperature 0° - 40° C   Humidity 5% - 95%			
Regulatory Certifications	FCC Class A, UL, CE, UKCA, VCCI, KCC, BSMI <sup>^</sup> , RCM, MTCTE <sup>^</sup> , ANATEL <sup>^</sup>   RoHS			
Standard Warranty	90-day hardware and software			

Hardware specifications and performance numbers are subject to change without notice, and may vary depending on configuration and environmental conditions. As for network interfaces, it's highly recommended to use A10 Networks' qualified optics/transceivers to ensure network reliability and stability.

\*1 Layer 7 connections per second - measures number of new HTTP connections (1 HTTP request per TCP connection, without TCP connection reuse) within 1 second | \*2 Tested with maximum SSL option. Cipher "TLS\_RSA\_WITH\_AES\_128\_CBC\_SHA256" with RSA 2K keys, unless noted, are used for RSA cases, "TLS\_ECDHE\_ECDSA\_WITH\_AES\_128\_CBC\_SHA256" with EC P-256 are used for PFS cases. | \*3 With base model. Number varies by hardware options (e.g. SSL cards) | \*4 With maximum SSL option | \*5 For FIPS 140-2 Level 2 validated, FIPS models must be purchased | \*6 10Gbps speed only | \*7 Performance numbers are measured with ACOS 5.2.1 release code | \*8 Currently, only the base model is available; the S-model with hardware TLS/SSL acceleration has reached its end of sales. | <sup>^</sup> Certification in process | + Select hardware SSL model only, certification in process

# Thunder ADC SPE Physical Appliance Specifications

	Thunder 6655S ADC	Thunder 7655S ADC
Modular License	-	-
<b>Performance</b>		
Application Throughput (L4/L7)	185 Gbps / 170 Gbps	370 Gbps / 340 Gbps
Layer 4 CPS	6 Million	12 Million
Layer 4 Concurrent Sessions	384 Million	768 Million <sup>*3</sup>
Layer 7 CPS (1:1) <sup>*1</sup>	2.25 Million	4.5 Million
SSL Bulk Throughput <sup>*2</sup>	72.5 Gbps	145 Gbps
SSL CPS <sup>*2</sup>	RSA: 100K ECDSA: 70K	RSA: 200K ECDSA: 140K
DDoS Protection (SYN flood) SYN/sec	250 Million	500 Million
<b>Network Interfaces</b>		
100/40 GE Fiber (QSFP28/QSFP+)	16	16
Management Ports	Ethernet mgmt. port, RJ-45 console port, Lights out management	
<b>Hardware Specifications</b>		
Processor (Intel Xeon)	28-core	2 x 28-core
Memory (ECC RAM)	192 GB	384 GB
Storage	SSD	SSD
Hardware Acceleration	FTA-5, SPE	2 x FTA-5, SPE
TLS/SSL Security Acceleration	Hardware	Hardware
Dimensions (Inches)	2.625 (H) x 17.5 (W) x 30 (D)	2.625 (H) x 17.5 (W) x 30 (D)
Rack Units (mountable)	1.5U	1.5U
Unit Weight	39 lbs	44.2 lbs
Power Supply (DC option available)	Dual 1500W RPS	Dual 1500W RPS
	80 Plus Platinum Efficiency, 100 - 240 VAC, 50 - 60 Hz	
Power Consumption (typical/max)	667W / 856W	1,121W / 1,300W
Heat in BTU/hour (typical/max)	2,276 / 2,921	3,826 / 4,436
Cooling Fan (front-to-back airflow)	Hot swap smart fans	
Operating Ranges	Temperature 0° - 40° C   Humidity 5% - 95%	
Regulatory Certifications	FCC Class A, UL, CE, UKCA, CB, VCCI, BSMI, RCM   RoHS, FIPS 140-2 <sup>*4</sup>	FCC Class A, UL, CE, UKCA, CB, VCCI, BSMI, RCM, MTCTE <sup>*</sup>   RoHS, FIPS 140-2 <sup>*4</sup>
Standard Warranty	90-day hardware and software	

Hardware specifications and performance numbers are subject to change without notice, and may vary depending on configuration and environmental conditions. As for network interfaces, it's highly recommended to use A10 Networks' qualified optics/transceivers to ensure network reliability and stability.

\*1 Layer 7 connections per second - measures number of new HTTP connections (1 HTTP request per TCP connection, without TCP connection reuse) within 1 second | \*2 Tested with Cipher "TLS\_RSA\_WITH\_AES\_128\_CBC\_SHA256" with 2K keys for RSA cases, "TLS\_ECDHE\_ECDSA\_WITH\_AES\_128\_CBC\_SHA256" with EC P-256 for ECC cases | \*3 Capacity has been increased (doubled) from ACOS 5.2.1-P7/6.0.1 onward | \*4 For FIPS 140-2 Level 2 validated, FIPS models must be purchased | \* Certification in process

## Thunder ADC for Low-latency Appliance Specifications

Thunder 3745	
<b>Performance</b>	
Mean Latency L7 <sup>*1</sup>	1.901 $\mu$ s
Max Latency L7	1.945 $\mu$ s
Concurrent NAT Sessions	32,000
<b>Network Interfaces</b>	
10/1 GE Fiber (SFP+/SFP)	4 <sup>*3</sup>
Management Ports	Ethernet mgmt. port, RJ-45 console port
<b>Hardware Specifications</b>	
Processor (Intel Xeon)	2 x 8-core
Memory (ECC RAM)	96 GB
Storage	SSD
Hardware Acceleration	FPM <sup>*2</sup>
Dimensions (Inches)	3.5 (H) x 19 (W) x 27.5 (D)
Rack Units (mountable)	2U
Unit Weight	43.8 lbs
Power Supply (DC option available)	Dual 850 W RPS 80 Plus Platinum efficiency, 100 - 240 VAC, 50 - 60 Hz
Power Consumption (typical/max)	450W / 463W
Heat in BTU/hour (typical/max)	1,536 / 1,580
Cooling Fan (front-to-back airflow)	Hot swap smart fans
Operating Ranges	Temperature 0° - 40° C   Humidity 5% - 95%
Regulatory Certifications	FCC Class A, CE, VCCI, RCM, UKCA, UL/CB
Standard Warranty	90-day hardware and software

Hardware specifications and performance numbers are subject to change without notice, and may vary depending on configuration and environmental conditions.

<sup>\*1</sup> 99th percentile. All the performance numbers are measured using FIX protocol with 670B packet size. | <sup>\*2</sup> Flow processing module (FPM) consists of FTA-3 (Flexible Traffic Accelerator) and SPE (Security and Policy Engine). | <sup>\*3</sup> 10Gbps speed only | <sup>^</sup> Certification in process

# A10 Thunder Multi-tenant Virtual Platform (MVP) Specifications

A10 Thunder MVP is an advanced multi-tenancy solution enabling multiple virtual instances of Application Delivery Controller (ADC) along with an expanded feature set of A10 capabilities on a purpose-built hardware.

ADC Performance	A10 Thunder MVP <sup>+</sup>
Application Throughput (L4 / L7)	200 Gbps / 200 Gbps
Connections Per Second (L4 / L7) <sup>*1</sup>	4.7 million / 2.7 million
SSL Bulk Throughput <sup>*2</sup>	60 Gbps
SSL CPS (RSA / ECDSA) <sup>*2</sup>	166K / 83K
vThunder Instances	Up to 14
Reference Platform Specifications	
Processor	2 x Intel Xeon 32-core
Memory	256 GB
Storage	2 x SSD
Network Interfaces	4 x 25/10 GE Fiber (SFP28/SFP+), 4 x 100/40 GE Fiber (QSFP28/QSFP+)
TLS/SSL Security Processor	Integrated QAT
Power Supply	Dual 1400W redundant power supply

Specifications and performance numbers are subject to change without notice, and may vary depending on configuration and environmental conditions.

<sup>\*1</sup> Layer 7 connections per second - measures number of new HTTP connections (1 HTTP request per TCP connection, without TCP connection reuse) within 1 second

<sup>\*2</sup> Tested with TLS 1.3 and RSA (2K keys) cipher: "TLS\_RSA\_WITH\_AES\_128\_CBC\_SHA256" and ECDSA (EC P-256) cipher: "TLS\_ECDHE\_ECDSA\_WITH\_AES\_128\_CBC\_SHA256"

+ Available bandwidth license: 100, 150, 200 Gbps. Maximum throughput performance depends on the license.

Thunder MVP performance specifications are aggregate number that use the following VM profiles:

- A10 Thunder MVP is tested on Dell R760 with 14-VM profile (6 vCPUs, 16 GB memory, 60GB storage, 4 SSL virtual functions (VFs) assigned on each vThunder)

# Thunder ADC Software Appliance Specifications

vThunder ADC	
Supported Hypervisors	VMware ESXi (VMXNET3, SR-IOV, PCI Passthrough), KVM (VirtIO, OvS with DPDK, SR-IOV, PCI Passthrough)
Hardware Requirements	See installation guide
Licenses <sup>5</sup>	30-day trial license Bandwidth license: Lab, 25 Mbps, 100 Mbps, 200 Mbps, 1 Gbps, 3 Gbps, 5 Gbps, 10 Gbps <sup>1</sup> , 20 Gbps <sup>1 2</sup> , 40 Gbps <sup>1 2</sup> , 100 Gbps <sup>2</sup> FlexPool license
Standard Warranty	90-day software

Thunder ADC for Public Cloud	AWS	Microsoft Azure	Google Cloud	Oracle Cloud
Product on Marketplace	Thunder ADC for AWS	Thunder ADC for Azure	Thunder ADC for GCP	vThunder Application Delivery Controller (ADC)
Throughput <sup>3</sup>	Up to 10 Gbps	Up to 10 Gbps	Up to 10 Gbps	Up to 24 Gbps
Licenses <sup>3</sup>	30-day trial license Pre-installed bandwidth license: • 20 Mbps, 100 Mbps, 200 Mbps, 500 Mbps, 1 Gbps, 5 Gbps, 10 Gbps BYOL bandwidth license FlexPool license	30-day trial license Pre-installed bandwidth license: • 20 Mbps, 100 Mbps, 200 Mbps, 500 Mbps, 1 Gbps, 5 Gbps, 10 Gbps BYOL bandwidth license FlexPool license	30-day trial license Pre-installed bandwidth license: • 20 Mbps, 100 Mbps, 200 Mbps, 500 Mbps, 1 Gbps, 5 Gbps, 10 Gbps BYOL bandwidth license FlexPool license	30-day trial license Pre-installed bandwidth license: • 1 OCPU to 24 OCPU BYOL bandwidth license FlexPool license

Thunder ADC Container	
Image Format	Open Container Initiative (OCI) compliant
Operating System	RedHat OpenShift Container Platform (OCP) (Version 4.16)
System Requirements	<ul style="list-style-type: none"> <li>• Minimum 4 vCPU and 16GB memory</li> <li>• One or more data interfaces</li> <li>• SR-IOV support using NVIDIA or Intel NICs</li> </ul>
Licenses	BYOL bandwidth license FlexPool license
Trial Details	Contact A10 Sales

Thunder ADC for Bare Metal	
System Requirements	See installation guide
Reference Platforms	Dell PowerEdge R760, Supermicro X13
Bandwidth Licenses <sup>4</sup>	10 Gbps (4 cores), 20 Gbps (8 cores), 40 Gbps (14 cores) and 60 Gbps (24 cores), FlexPool (Up to 60 Gbps per Thunder ADC)
Standard Warranty	90-day software

\* 1 SR-IOV | \*2 PCI Passthrough | \*3 Per-instance maximum throughput varies depending on instance type and configurations | \*4 Licenses are tied to the maximum number of CPU cores that can be allocated to ACOS | \*5 Actual throughput varies depending on the system configuration and solutions in use. Bandwidth license is available with a choice of perpetual or term-based licenses.

# Detailed Feature List

Features may vary by appliance.

## Application Delivery

- Comprehensive IPv4/IPv6 support
- Advanced Layer 4/Layer 7 server load balancing
  - Fast HTTP, Full HTTP proxy, HTTP/2, HTTP/3
  - High-performance, template-based Layer 7 switching with header/URL/domain manipulation
  - Comprehensive Layer 7 application persistence support
  - SIP, MQTT, RTSP, SMTP, POP3, FTP, FIX and more
- DNS load balancing
  - Layer 4 (UDP/TDP) and Layer 7 (DNS-UDP/DNS-TCP)
  - Recursive DNS lookup
  - DNS firewall/RPZ
  - DNS cache
- Comprehensive load balancing methods
  - Round robin, least connections, weighted RR, weighted LC, fastest response, and more
- aFlex – Deep packet inspection and transformation for customizable, application-aware switching
- Advanced health monitoring
  - Comprehensive protocol support – ICMP, TCP, UDP, HTTP, HTTPS, FTP, RTSP, SMTP, POP3, SNMP, DNS, RADIUS, LDAP and more
  - Scriptable health check support using TCL, Python, Perl, Bash
  - Compound health monitor support
- High availability – active-active, active-standby configurations
- SIP load balancing for VoIP
- STARTTLS support for secure email and LDAP
- Network traffic filtering – high-speed processing of large black/white lists
- Firewall load balancing (FWLB)
- Global server load balancing (GSLB)
- Traffic steering/service chaining
- Transparent cache switching (TCS)
- Next hop load distribution (NHLD) for load balancing multiple links
- Diameter AAA load balancing
- RADIUS load balancing
- Database load balancing
- Internet content adaptation protocol (ICAP) support
- Low latency FIX support

## Application Acceleration

- HTTP acceleration and optimization
  - HTTP connection multiplexing (also called TCP connection reuse)
  - RAM caching
  - HTTP compression
- SSL offload
  - SSL termination, SSL bridging
  - SSL proxy
  - SSL session ID reuse
- TCP optimization support including selective acknowledgment, client keep-alive and window scaling
- HTTP pipelining
- HTTP/2, SPDY protocol
- HTTP/3, QUIC protocol

## Application Security

- Next-Generation Web Application Firewall (Next-Gen WAF)
- DNS application firewall (DAF)
- Integrated DDoS protection for application services
- Hardware-based DDoS protection
- Application Access Management (AAM) – SAML, WIA, Kerberos, NTLM, TDS SQL Logon, LDAP, RADIUS, Basic, OCSF stapling, HTML Form-based
- AAM RADIUS-based audit support
- Single sign-on (SSO) authentication relay
- Authentication for Microsoft SharePoint, Outlook Web Access, and other packaged and custom applications
- Comprehensive SSL/TLS support
  - TLS 1.2 and TLS 1.3
  - Perfect Forward Secrecy (PFS) with Elliptic Curve Diffie-Hellman Exchange (ECDHE) and other Elliptic Curve Cryptography (ECC) ciphers
  - AES-NI and GCM ciphers
- IP anomaly detection
- DDoS attack detection and prevention using zero-day source behavior attack detection and recognition (ZBAR)

- Defend against HTTP request smuggling
- Connection rate limiting/connection limiting
- Bandwidth rate limiting per source IP
- Dynamically add IPs to black-white lists
- Support for Simple Certificate Enrollment Protocol (SCEP)
- ACME client support for automatic certificate renewal

## A10 Next-Gen WAF, powered by Fastly\*\*

- Comprehensive OWASP top attacks protection
- Account takeover (ATO) protection
- Advanced rate limiting
- Network learning exchange (NLX)
- Virtual patching for CVEs
- Streamlined management and extensive visibility on application attacks and anomalies
- Compliance
- Explicit proxy deployment support

## A10 Threat Intelligence Service\*\*

- Dynamically updated threat intelligence feed

## Scalable, High-performance Platform

- Advanced Core Operating System (ACOS)
  - Multi-core, multi-CPU support
  - Linear application scaling
  - ACOS on data plane
- Linux on control plane
- IPv6 feature parity

## Networking

- Integrated Layer 2/Layer 3
- Transparent mode/gateway mode
- Virtual wire interface support
- Routing – static routes, IS-IS (v4/v6), RIPv2/ng, OSPF v2/v3, BGP4+
- L2 protocols (STP, RSTP, MSTP)
- VLAN (802.1Q)
- Link aggregation (802.1AX), LACP
- Access control lists (ACLs)
- Traditional IPv4 NAT/NAPT
- IPv6 NAPT
- Jumbo frame support\*
- Hardware-accelerated VXLAN\*
- NVGRE

## IPv6 Migration/IPv4 Preservation

- Full native IPv6 management and feature support
- SLB-PT (Protocol Translation), SLB-64 (IPv4<->IPv6, IPv6<->IPv4)
- Carrier grade NAT (CGN/CGNAT), Large scale NAT (LSN), NAT444, NAT44, NAT46
  - Integrated DDoS protection for NAT pools
- NAT64/DNS64, DS-Lite, 6rd, LW4o6
- ALG protocol support for protocols with dynamic ports like SIP and FTP

## Management

- Dedicated on-box management interface (GUI, CLI, SSH, Telnet)
- Web-based AppCentric templates (ACT) intuitive guided configuration tool
- SNMP, syslog, email alerts, NetFlow v9 and v10 (IPFIX), sFlow
- RESTful API (aXAPI)
- LDAP, TACACS+, RADIUS support
- Configurable control CPUs
- Interoperable with A10 Control and Harmony Controller for centralized management, configuration and analytics
- Plug-in available for VMware vRealize Orchestrator deployments

## Detailed Feature List (Cont.)

### Virtualization

- Thunder virtual appliance for VMware vSphere ESXi, and KVM
- Thunder ADC for Amazon Web Services (AWS), Microsoft Azure, Google Cloud and Oracle Cloud
- Thunder ADC for Bare Metal
- Thunder ADC for containers
- Networking acceleration (SR-IOV, DPDK) and management integration
- A10 Thunder MVP for multi-tenant solution

### Extensibility

- aVCS (Virtual Chassis System)
- Multi-tenancy with application delivery partition (ADP) based management
- Layer 3 - 7 virtualization

### Centralized Management and Analytics with A10 Control

- Multi-tenant service platform architecture
- Device, configuration and certificate management
- Metrics for monitoring device health and performance
- Application traffic insights showing traffic trends based on requests, throughput, and connection rates, along with detailed metrics for top clients, source location, request methods and response codes.
- Performance insights such as average end-to-end latency, server response time, cache utilization and so on
- Application insights visualizing charts of response time and app latency charts, and detailed metrics for top domains, URLs
- Session logs, error logs, and alert notifications for efficient troubleshooting
- On-demand/scheduled per-app service level reports
- Easy integration with popular collaboration platforms like Microsoft Teams and Slack

### DevOps Tools and Integration

- Ansible modules and playbooks
- Terraform Thunder provider
- HashiCorp's Consul and Network Infrastructure Automation (NIA) integration
- Thunder Kubernetes Connector (TKC)
- Microsoft Azure ARM templates
- AWS CloudFormation templates
- OpenStack Octavia driver
- Cloud-init support for auto-configuration on
  - OpenStack
  - OCI
  - AWS
  - Azure
- Prometheus integration for visibility and analytics monitoring
- Automatic certificate renewal with Sectigo, Let's Encrypt, Venafi and more
- Thunder Observability Agent (TOA) for publishing Thunder metrics and logs to
  - AWS CloudWatch
  - Azure Application Insights / Log Analytics
  - VMware vRealize Operations (vROps) / Log Insights (vRLI)

### Carrier-grade Hardware\*

- Advanced hardware architecture
- Hardware-based SYN cookies
- Hot swap redundant power supplies (AC or DC)
- Smart fans (hot swap)
- Solid-state drive (SSD)
- Tamper detection
- Lights out management (LOM/IPMI)
- 25 GbE ports, 40 GbE ports, 100 GbE ports
- High-performance security processor option

### Flexible Licensing

- Modular licensing for Thunder hardware\* allowing "pay-as-you-grow" model and capacity upgrade
- Fixed bandwidth licensing for Thunder running in any software form factor
- FlexPool: portable and flexible capacity pooled licensing for software Thunder running across any private and public clouds

### Security and Capability Assurance Certifications\*

- Next-Gen WAF is PCI DSS compliant as a Level 1 Service Provider
- Common Criteria EAL 2+
- FIPS 140-2 Level 2
- Joint Interoperability Test Command (JITC)
- Network Equipment Building System (NEBS) compliance

\* Features and certifications may vary by appliance.

\*\* Additional subscription or service is required.

## About A10

[A10Networks.com](https://www.a10networks.com)

### Contact Us

[A10Networks.com/contact](https://www.a10networks.com/contact)

©2026 A10 Networks, Inc. All rights reserved. A10 Networks, the A10 Networks logo, ACOS, Thunder, Harmony and SSL Insight are trademarks or registered trademarks of A10 Networks, Inc. in the United States and other countries. All other trademarks are property of their respective owners. A10 Networks assumes no responsibility for any inaccuracies in this document. A10 Networks reserves the right to change, modify, transfer, or otherwise revise this publication without notice. For the full list of trademarks, visit: [A10Networks.com/a10trademarks](https://www.a10networks.com/a10trademarks).

Part Number: A10-DS-15100-EN-62 March 2026