

Network Snapshot

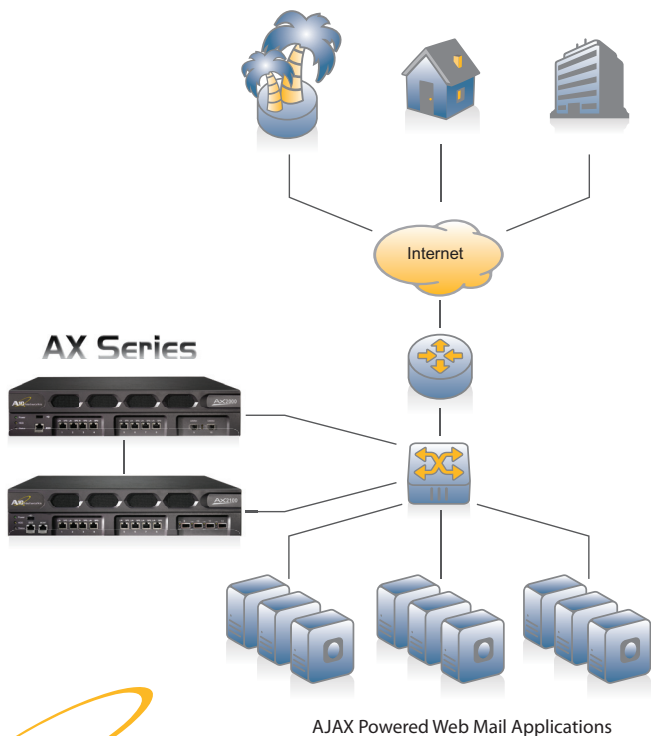
AX Series
Earth Class Mail
January 2009



SITUATION

Earth Class Mail, based in Seattle WA, provides the only online postal-mail service designed for individuals, small businesses, enterprises, government agencies and the military. Customers in more than 175 countries currently access and manage their mail online, at any time and from anywhere there's an Internet connection. For enterprises and government agencies, Earth Class Mail digitizes paper mail at its entry point, injecting it directly into an organization's electronic workflow and saving 75% of typical document lifecycle costs.

Earth Class Mail required a new server load balancer solution to load-balance the Web servers that run the business-critical AJAX-powered Web mail applications. The AJAX Web applications are high-volume with millions of XML formatted messages passed daily.



“ A10’s aXAPI within the AX Series server load balancers allows our developers to remotely perform or automate tasks, such as adding and removing servers as needed. The beauty of A10’s approach is that it is a REST-based API versus other more complicated approaches. This requires less of a learning curve, is easier to understand and enables integration between the applications and the networking equipment. ”

Derek Hill, Director of IT for Earth Class Mail

SOLUTION

Given the requirement for privacy and protection of personal information in its online postal-mail service, Earth Class Mail needed a load balancer that can encrypt and re-encrypt SSL on the backend. Because its previous load balancer could not perform the SSL encryption/re-encryption, Earth Class Mail compared competitors’ products and selected A10’s AX Series server load balancers. The SSL functionality combined with the industry-leading price/performance and support were key competitive differentiators for the AX Series.

While in production, Earth Class Mail tested AX’s aXAPI, which is a REST-style XML API. Earth Class Mail quickly saw the benefits of the REST-style approach to incumbent vendors’ SOAP-based approaches due to simpler and quicker integration with the existing Web mail applications. In addition, Earth Class Mail relies on AX’s aFleX scripting for advanced Layer 7 application traffic control. With aFleX scripts, Earth Class Mail can now effectively add and remove servers from the server group, based on traffic load.

SUCCESS

Upon deploying AX Series, Earth Class Mail’s high-volume Web applications and Web servers are performing optimally, enabling the company to excel at delivering a unique digital-mail service to its customers that streamlines document management, increases employee productivity, reduces costs of delivery and benefits the environment.

Network Snapshot

Earth Class Mail

January 2009



Earth Class Mail™
YOUR POSTAL MAIL ONLINE

ABOUT AX SERIES

A10 Networks' AX Series is the industry's best price/performance advanced traffic manager, helping enterprises and ISPs maximize application availability through a high-performance and scalable Web Application Delivery platform. The AX's Advanced Core Operating System (ACOS) has garnered numerous awards and is revolutionary due to its true symmetrical multi-processing (SMP) architecture. AX includes an optimized multi-CPU platform built from the ground up that leaps the competition in performance, scalability and reliability. For more information, visit: www.a10networks.com/products/axseries



ABOUT A10 NETWORKS

A10 Networks was founded in 2004 with a mission to provide innovative networking and security solutions. A10 Networks makes high-performance products that help organizations accelerate, optimize and secure their applications. A10 Networks is headquartered in Silicon Valley with offices in the United States, Japan, China, Korea and Taiwan. For more information, visit: www.a10networks.com

ABOUT EARTH CLASS MAIL

Earth Class Mail's system digitizes envelopes at midstream of the delivery process, presenting two-sided color images of incoming envelopes to customers via email and in customers' secure online accounts. Then, for each new mail item, customers can use Earth Class Mail's patent-pending Recipient Choice™ technology to have the item opened and the contents confidentially scanned for secure online viewing, or to have it shredded, archived, delivered to the right desk, transferred to another person without need of inter-office mail systems, or forward-shipped to another location. For more information, visit: www.earthclassmail.com